



# GAT MONTHLY MEMBERSHIP PROGRESS REPORT

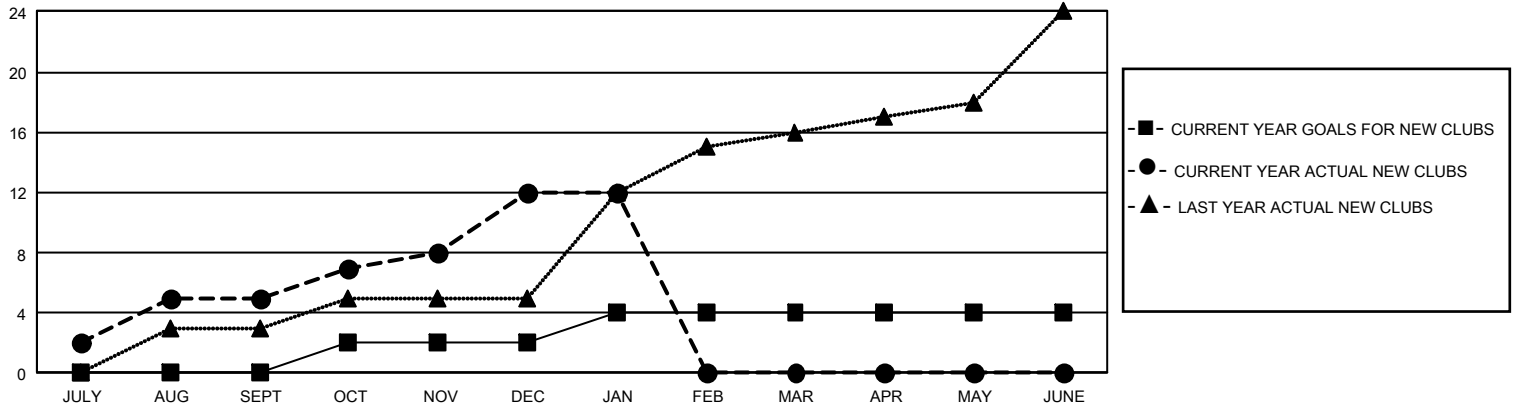
Results as of: 1/31/2025

## GMT Constitutional Area 6 - S, Group B

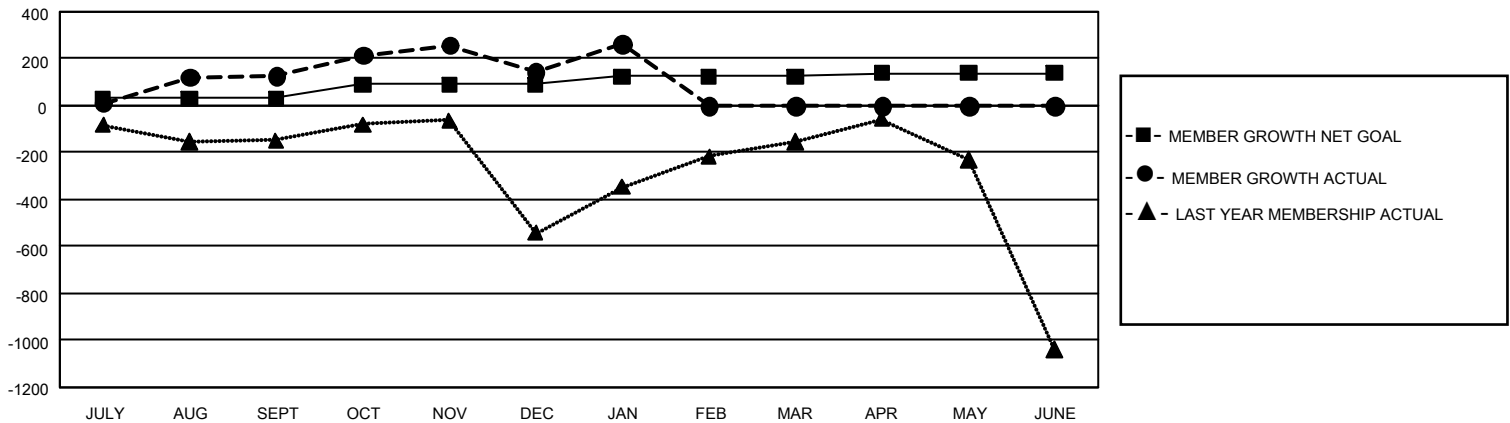
REPORT DOES NOT INCLUDE CLUBS IN UNDISTRICTED AREAS.

Clubs				Members			
RESULTS FOR 2024-2025				RESULTS FOR 2024-2025			
QUARTER	NEW CLUB GOAL	NEW CLUBS	DROPPED CLUBS	QUARTER	MEMBER GROWTH NET GOAL	MEMBER GROWTH ACTUAL	DROPPED MEMBERS ACTUAL (including transfers)
JULY/AUG/SEPT	0	5	6	JULY/AUG/SEPT	30	596	307
OCT/NOV/DEC	6	7	8	OCT/NOV/DEC	60	493	425
JAN/FEB/MAR	6	0	0	JAN/FEB/MAR	35	179	20
APR/MAY/JUNE	0	0	0	APR/MAY/JUNE	15	0	0

GOALS AND ACTUAL NEW CLUBS CUMULATIVE



GOALS AND ACTUAL MEMBERS CUMULATIVE



DROPPED CLUBS: 14

178 CLUBS OF 449 ADDED 1 OR MORE NEW MEMBERS

### GENDER DISTRIBUTION

MALE	5,833 (70.74%)
FEMALE	2,412 (29.25%)
NON BINARY	0 (0.00%)
PREFER NOT TO ANSWER	1 (0.01%)

### DROPPED MEMBERS

DECEASED	12
CLUB CANCELLED	87
OTHER	646
<b>TOTAL</b>	<b>745</b>

[CLICK HERE FOR CUMULATIVE MEMBERSHIP DATA](#)

TOTAL FAMILY UNIT MEMBERS 0

FAMILY MEMBERS PAYING HALF DUES 0